



Hertfordshire and  
West Essex Integrated  
Care System

# HEALTHY YOUNG MINDS IN HERTS

Children & Young People's Mental Health Services (CYP MHS)  
Transformation Plan for Hertfordshire



Hertfordshire and  
West Essex  
Integrated Care Board

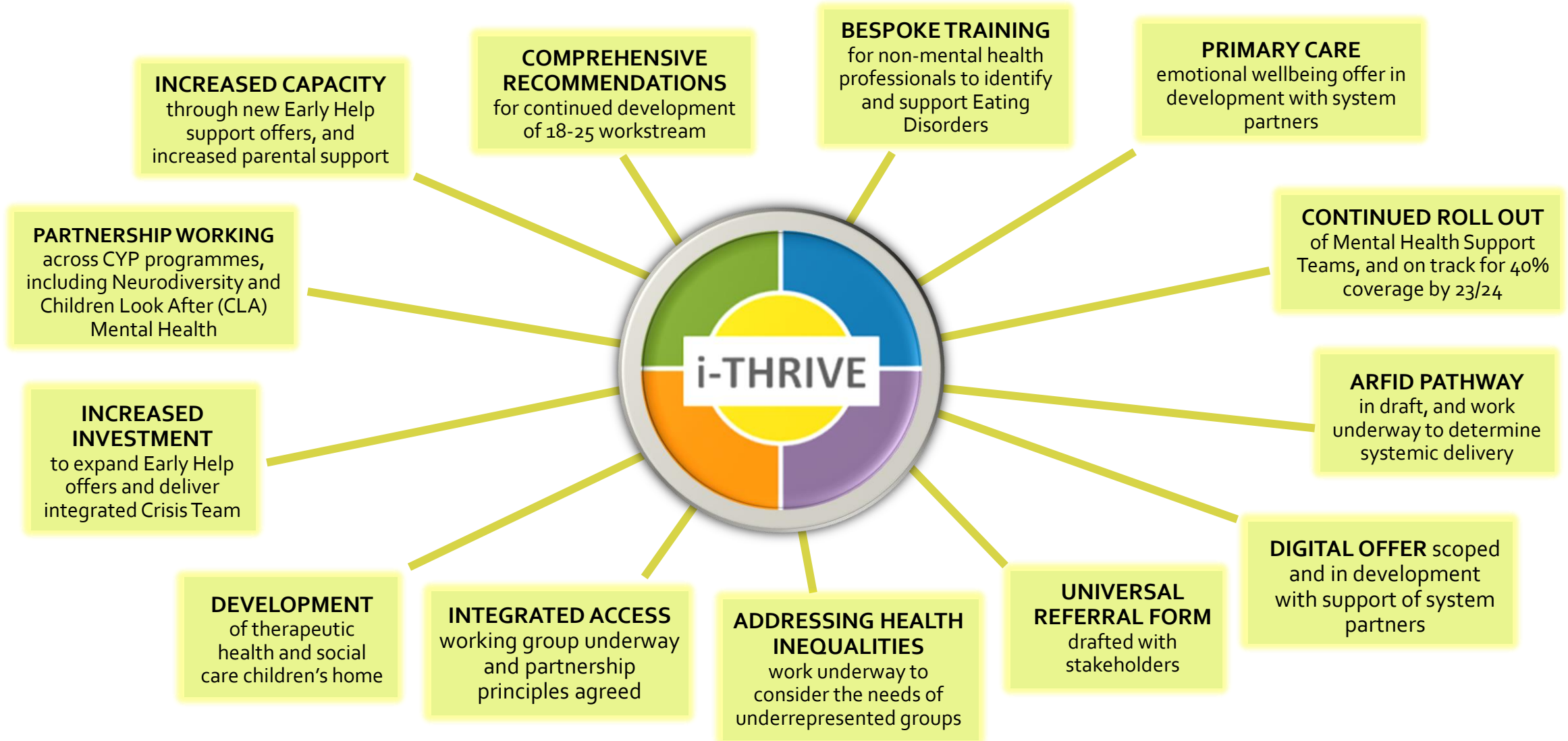


Herts Mental Health,  
Learning Disability and  
Autism Health and Care  
Partnership



# Hertfordshire Local Transformation Plan - October 2022

Following the Hertfordshire CAMHS review, and the national Future in Mind review in 2015, recommendations were made to aid the improvement of mental health and emotional wellbeing support available to our children and young people (CYP). There has been ongoing progress in Hertfordshire, with a number of key highlights...



Ambition	Overview	Updates for 2022/23
Crisis	<ul style="list-style-type: none"> <li>Development of integrated 24/7 Crisis Support across Health and Social Care</li> </ul>	<ul style="list-style-type: none"> <li>Increased investment of £1.9m to deliver integrated crisis team – ongoing recruitment initiatives</li> <li>Development of therapeutic health and social care children’s home</li> </ul>
Early Help	<ul style="list-style-type: none"> <li>Increase capacity and access to counselling and therapy</li> <li>Enable more CYP to be seen at earliest point of need</li> <li>Parent support</li> <li>Improved offers 0-5s and 16+</li> </ul>	<ul style="list-style-type: none"> <li>Increased capacity through additional investment: <ul style="list-style-type: none"> <li>New Early Help Eating Disorder service</li> <li>New Early Help Digital Support service</li> <li>Increased parental support offer</li> <li>Children’s Wellbeing Practitioner (CWP) service</li> </ul> </li> <li>Ongoing mapping and gap analysis of 0-5 MH offer</li> <li>Recommendations report for 18-25 workstream in progress</li> </ul>
Eating Disorders	<ul style="list-style-type: none"> <li>Increase capacity across the THRIVE Framework quadrants</li> <li>ARFID Support</li> <li>Home Treatment Team / Outreach</li> </ul>	<ul style="list-style-type: none"> <li>ARFID pathway in draft form and work underway to determine how the system will deliver this</li> <li>Training for professionals to identify and support ED</li> <li>Bespoke training for Acute Hospital staff and webinars and support for Education</li> <li>Paediatric Liaison model agreed</li> </ul>
Finance	<ul style="list-style-type: none"> <li>Proportional distribution of financial investment relevant to needs</li> </ul>	<ul style="list-style-type: none"> <li>Increased investment of c.£1.5m per annum for Early Help services</li> <li>Approval of business cases for funding to support initiatives across the continuum of needs</li> </ul>

Ambition	Overview	Updates for 2022/23
Digital Offer	<ul style="list-style-type: none"> <li>• Website for emotional and mental wellbeing support and guidance</li> <li>• Digitalised online support</li> <li>• Parent / families and professional support</li> </ul>	<ul style="list-style-type: none"> <li>• Scoping of digital provisions offered by other areas around the country</li> <li>• Professionals survey to identify needs and preferences regarding digital support and resources</li> <li>• Engagement with CYP</li> <li>• Scoping website for central support offer in Hertfordshire</li> <li>• Business case approved to develop digital offer</li> </ul>
Improved Access	<ul style="list-style-type: none"> <li>• Universal referral form</li> <li>• Improve access across the THRIVE framework quadrants</li> <li>• Referrals allocated to appropriate pathways</li> <li>• Smooth transfer of CYP across continuum of need</li> <li>• Addressing health inequalities</li> </ul>	<ul style="list-style-type: none"> <li>• Preliminary universal referral form coproduced with stakeholders</li> <li>• Investment into Early Help services – c.450 CYP per annum via Eating Disorder service; c. 10,000+ CYP per annum via Digital Support service</li> <li>• Business case approved to develop integrated access</li> <li>• Active working groups for access and transfers, and understanding the needs of underrepresented groups</li> </ul>
Place-Based Support	<ul style="list-style-type: none"> <li>• Development of Primary Care Network offer</li> <li>• Increase MHSTs in schools</li> <li>• Linking with Education and Voluntary &amp; Community sectors</li> <li>• Increasing capacity to support mental health in children’s Social Care</li> </ul>	<ul style="list-style-type: none"> <li>• Ongoing work with Primary Care on the development of an emotional wellbeing offer</li> <li>• Continued roll out of MHSTs – on track to have 40% coverage across ICS by 23/24</li> <li>• 954 trained Mental Health Leads across the education system</li> <li>• Establishment of Emotional and Mental Wellbeing in Education Team</li> <li>• Implementing and evaluating a trauma focused community of practice in Children’s Services</li> </ul>